



**BC Cancer Agency**

CARE + RESEARCH

*An agency of the Provincial Health Services Authority*

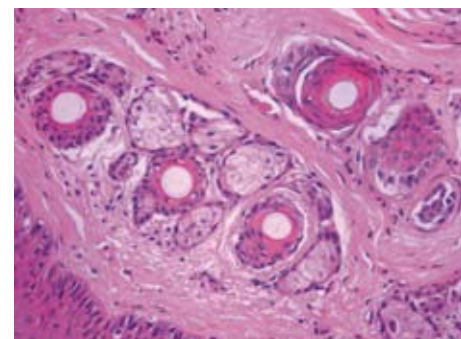
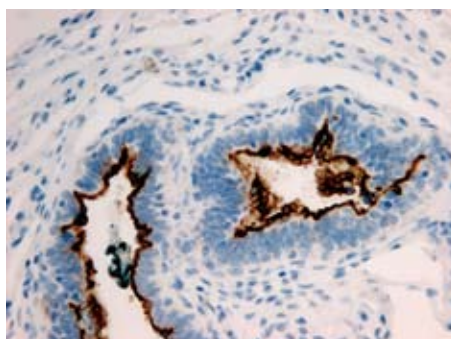
**Investigational Drug Program** **P**

*Part of the Translational Research Activities of the BC Cancer Agency*

**Proud member of the BC Preclinical  
Research Consortium**

## GLP Toxicology

- SOP driven
- Fulfills requirements for IND or CTA for rodent studies
- Performed in mice or rats
- Single dose range finding or acute studies
- Repeat dose studies
- Acute, chronic or subchronic toxicity
- Includes comprehensive cbc/diff and chem screen results
- Complete pathology report



*The BC Cancer Agency's Investigational Drug Program and Wax-it Histology Services have entered into a partnering agreement to provide seamless GLP toxicology services to our clients*

**Wax-it Histology Services Inc.**

202 - 2386 East Mall

Vancouver, BC

CANADA V6T 1Z3



**Wax-it**

HISTOLOGY SERVICES INC.

P: 604.822.1595

F: 604.822.0660

E: [info@waxitinc.com](mailto:info@waxitinc.com)

W: [www.waxitinc.com](http://www.waxitinc.com)