

DID YOU KNOW...

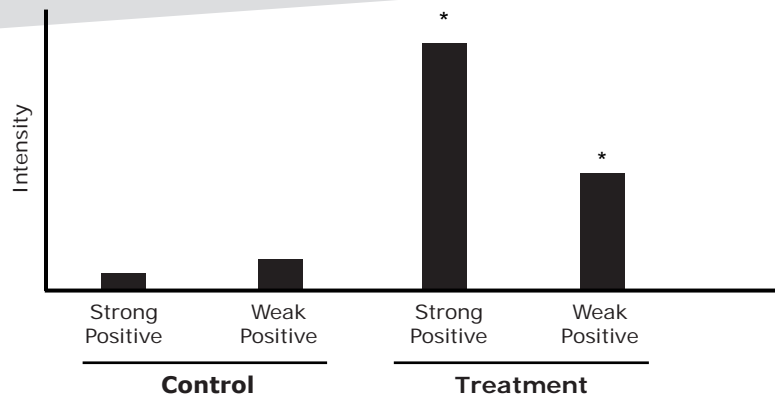
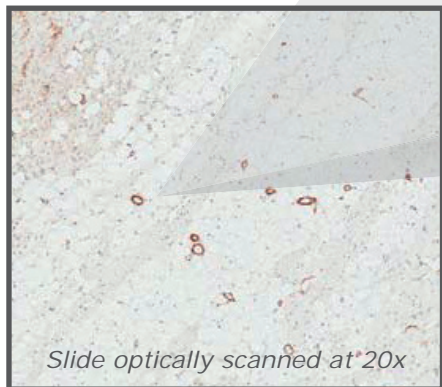
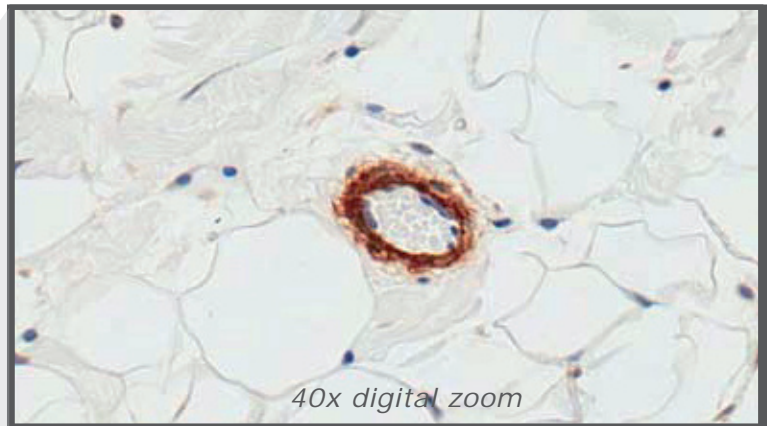
Wax-it has an extensive immunohistochemistry program available. Our full program simply requires you to tell us the antigen of interest, and our scientists can:

1. Source the optimum antibody based on a comprehensive scientific literature review
2. Develop an immunohistochemistry staining protocol specific to your study
3. Perform a digital whole slide scan of each stained tissue specimen for real-time magnification
4. Perform semi-automated quantification and report generation of the expression profile, with all data stored in an easy to use Microsoft Excel format

... below is an example study highlighting a typical format the data can be represented in...

CASE STUDY - Antibody expression profile

- Digital slide scanning allows users to zoom into regions of interest in real-time
- Our semi-automated quantification method ensures unbiased scoring results
- Data parameters generated include area scored, total positive pixels, average positive pixels, and total intensity, all of which are separated amongst weak and strong staining...and much more!



The Wax-it Referral Program:

Refer a colleague to Wax-it and receive a \$100 **Starbucks gift card** **

** Colleague must be a new client to Wax-it Histology Services and must have a project value of at least \$200 to qualify. Gift card will be issued once the referred colleague's new project has been delivered to Wax-it. Valid 1 gift card per academic research lab or company.

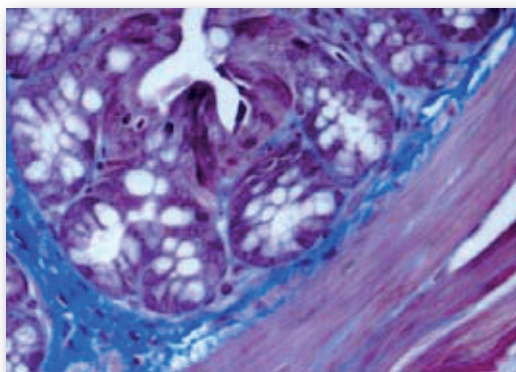
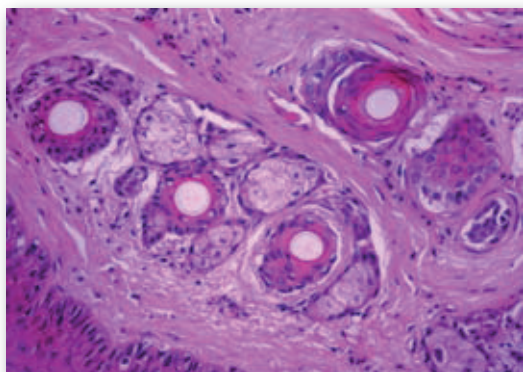


WHAT NEW SERVICES WOULD YOU LIKE TO SEE AT WAX-IT?

To participate in our **online survey**, [click here](#)

FAST FACTS

- ▶ The first step in the histological process is the isolation and fixation of the desired tissue.
- ▶ The purpose of fixation is to preserve tissues permanently in as life-like a state as possible.
- ▶ Fixation should be carried out as soon as possible after removal of the tissues to prevent autolysis.
- ▶ There is no perfect fixative, though formaldehyde comes the closest.
- ▶ Thus, a variety of fixatives are available for use, depending on the type of tissue present and features to be demonstrated.
- ▶ The 5 major groups of fixatives, classified according to mechanism of action, include:
 - Aldehydes
 - Mercurials
 - Alcohols
 - Oxidizing Agents
 - Picrates
- ▶ At Wax-it we use 10% buffered-formalin for most of our tissues as it is the most forgiving of all. fixatives when conditions are not ideal, and there is no tissue that it will harm significantly.



INQUIRE TODAY

at 604-822-1595 to find out
how we can tailor this program
to your specific needs!

MOVING? HAS YOUR CONTACT INFORMATION CHANGED?

Please update us with your new contact information and receive a **\$20 Starbucks gift card!**