



Wax-it
HISTOLOGY SERVICES INC.

customized *solutions* for your research



WHO we are

- > A GLP-compliant pre-clinical contract research organization
- > Experts in animal and plant histological solutions
- > Committed to providing high-quality services with fast turn-around times
- > Provides both GLP and Non-GLP services

OUR facilities

- > Full-service histopathology laboratory
- > Secured facilities to maintain confidentiality and integrity of all projects
- > State-of-the-art automated equipment ensures consistent high-quality work with fast turn-around times
- > Dedicated GLP-compliant Quality Assurance Unit that upholds FDA regulatory compliancy to the highest standards



reach your *milestones* faster

save money on *infrastructure*

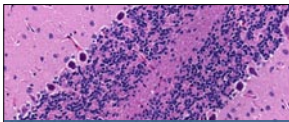
more *cost-effective* than hiring experts

access to *knowledgeable* and trained staff

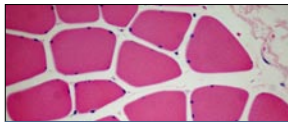
personalized *service*

OUR services

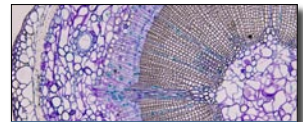
Paraffin Sectioning | Frozen (Cryo) Sectioning | Resin Sectioning | RNase Free Protocols | Special Stains
Immunohistochemistry | In situ Hybridization | Antibody Testing and Protocol Development | Research and
Development on New Methods | Knife Sharpening | Image Processing | Pathological Scoring and Analysis



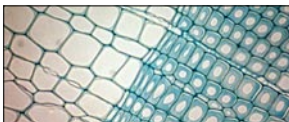
Cerebellum — H&E



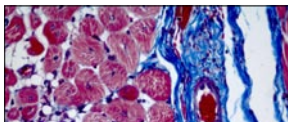
Muscle — H&E



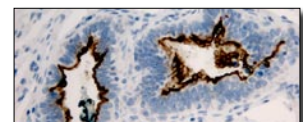
Pine Stem — Safranin Fast Green



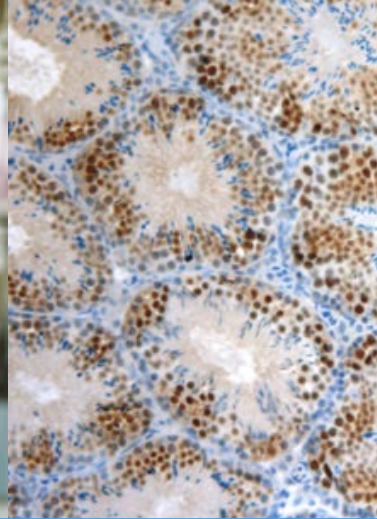
Pine Root — Light Green



Muscle — Masson's Trichrome



Calretinin — IHC



OUR people

- > Highly qualified and experienced staff
- > Extensive knowledge in all facets of histology and related areas
- > Dedicated experts who follow strict quality control measures
- > PhD level scientists for technical expertise and troubleshooting

A microscopic image of tissue, likely a histological section, stained with blue and red dyes. The blue staining highlights the nuclei and connective tissue, while the red staining highlights the cytoplasm and extracellular matrix. The tissue shows a complex, interconnected structure with various cell types and fibers.

SELECT markets

- > Pharmaceutical and biotechnology companies
- > Universities and research institutes
- > Hospital laboratories
- > Government organizations

CONTACT **info**

#202 — 2386 EAST MALL
VANCOUVER,
BRITISH COLUMBIA, CANADA
V6T 1Z3

pH. 604.822.1595

f X. 604.822.2589

eM. info@waxitinc.com

www.waxitinc.com

